



COMMONWEALTH OF KENTUCKY  
TRANSPORTATION CABINET  
www.transportation.ky.gov/

Andy Beshear  
GOVERNOR

Jim Gray  
SECRETARY

May 23, 2022

CALL NO. 202  
CONTRACT ID NO. 224434  
ADDENDUM # 2

Subject: Jessamine and Fayette Counties, 121GR22T008-HSIP  
Letting May 26, 2022

- (1) Revised - Material Summary- Pages 78-86 of 249
- (2) Revised - Summary Sheets - Pages 102-103, 110, and 159 of 249
- (3) Revised - Detail Sheets - Page 118 of 249
- (4) Added - Detail Sheets - Pages 118(a) and 126(a) of 249
- (5) Revised - Proposal Bid Items - Pages 245-249 of 249

Proposal revisions are available at <http://transportation.ky.gov/Construction-Procurement/>.

If you have any questions, please contact us at 502-564-3500.

Sincerely,

Rachel Mills,

A handwritten signature in black ink that reads "Rachel Mills".

Rachel Mills, P.E.  
Director  
Division of Construction Procurement

RM:mr  
Enclosures

# MATERIAL SUMMARY

**CONTRACT ID: 224434**

**121GR22T008-HSIP**

**0703400042201**

NEW CIRCLE ROAD (KY 4) SIDEWALK AND DRAINAGE IMPROVEMENTS AT THE INTERSECTION OF KY 4 AT KY 353 (RUSSELL CAVE RD) GRADE & DRAIN, A DISTANCE OF .06 MILES.

Project Line No	Bid Code	DESCRIPTION	Quantity	Unit
1300	02101	CEM CONC ENT PAVEMENT-8 IN	72.00	SQYD
1305	20550ND	SAWCUT PAVEMENT	233.00	LF
1310	01811	STANDARD CURB AND GUTTER MOD	178.00	LF
1315	01875	STANDARD HEADER CURB	30.00	LF
1320	02562	TEMPORARY SIGNS	100.00	SQFT
1325	02650	MAINTAIN & CONTROL TRAFFIC - (FAYETTE KY 4 @ RUSSELL CAVE RD)	1.00	LS
1330	02671	PORTABLE CHANGEABLE MESSAGE SIGN	2.00	EACH
1335	02705	SILT TRAP TYPE C	5.00	EACH
1340	02708	CLEAN SILT TRAP TYPE C	5.00	EACH
1345	02720	SIDEWALK-4 IN CONCRETE	178.00	SQYD
1350	02726	STAKING - (FAYETTE KY 4 @ RUSSELL CAVE RD)	1.00	LS
1355	02775	ARROW PANEL	1.00	EACH
1360	05950	EROSION CONTROL BLANKET	102.00	SQYD
1365	05990	SODDING	288.00	SQYD
1370	23158ES505	DETECTABLE WARNINGS	51.00	SQFT
1375	00462	CULVERT PIPE-18 IN	128.00	LF
1380	01550	DROP BOX INLET TYPE 12A	35.00	LF
1385	01584	CAP DROP BOX INLET	1.00	EACH
1390	01642	JUNCTION BOX-18 IN	1.00	EACH
1395	02625	REMOVE HEADWALL	1.00	EACH
1400	08100	CONCRETE-CLASS A	1.13	CUYD
1405	21541NN	CORED HOLE DRAINAGE BOX CON- 18 IN	1.00	EACH
1410	23952EC	DRAINAGE JUNCTION BOX TY B	1.00	EACH
1415	20194ED	REMOVE & RESET TRAFFIC SIGN	1.00	EACH
1420	02569	DEMOBILIZATION	1.00	LS

# MATERIAL SUMMARY

**CONTRACT ID: 224434**

**121GR22T008-HSIP**

**0703400252001**

GEORGETOWN RD (US 25) IMPROVEMENTS AT THE INTERSECTION OF GEORGETOWN RD (US 25) AND CITATION BLVD ASPHALT SURFACE WITH GRADE & DRAIN, A DISTANCE OF .07 MILES.

Project Line No	Bid Code	DESCRIPTION	Quantity	Unit
0005	00214	CL3 ASPH BASE 1.00D PG64-22	42.00	TON
0010	00388	CL3 ASPH SURF 0.38B PG64-22	5.10	TON
0015	24970EC	ASPHALT MATERIAL FOR TACK NON-TRACKING	.07	TON
0020	00001	DGA BASE	47.00	TON
0025	01812	REMOVE CURB AND GUTTER	147.00	LF
0030	01825	ISLAND CURB AND GUTTER	150.00	LF
0035	02200	ROADWAY EXCAVATION	94.00	CUYD
0040	02562	TEMPORARY SIGNS	119.00	SQFT
0045	02650	MAINTAIN & CONTROL TRAFFIC - (FAYETTE US 25 @ CITATION BLVD)	1.00	LS
0050	02671	PORTABLE CHANGEABLE MESSAGE SIGN	2.00	EACH
0055	02705	SILT TRAP TYPE C	4.00	EACH
0060	02708	CLEAN SILT TRAP TYPE C	4.00	EACH
0065	02726	STAKING - (FAYETTE US 25 @ CITATION BLVD)	1.00	LS
0070	05990	SODDING	100.00	SQYD
0075	06541	PAVE STRIPING-THERMO-4 IN Y	106.00	LF
0080	20550ND	SAWCUT PAVEMENT	143.00	LF
0085	24683ED	PAVE MARKING-THERMO DOTTED LANE EXTEN - (6 INCH WIDTH)	54.00	LF
0090	04844	CABLE-NO. 14/5C	750.00	LF
0095	20188NS835	INSTALL LED SIGNAL-3 SECTION	4.00	EACH
0100	02569	DEMOBILIZATION	1.00	LS

# MATERIAL SUMMARY

**CONTRACT ID: 224434**

**121GR22T008-HSIP**

**0703400272002**

NORTH BROADWAY (US 27) IMPROVEMENTS AT THE INTERSECTION OF NORTH BROADWAY (US 27) AND W LOUDON AVE ASPHALT PAVEMENT & ROADWAY REHAB.

Project Line No	Bid Code	DESCRIPTION	Quantity	Unit
0220	00388	CL3 ASPH SURF 0.38B PG64-22	152.00	TON
0225	02676	MOBILIZATION FOR MILL & TEXT - (FAYETTE US 27 @ W LOUDON AVE)	1.00	LS
0230	02677	ASPHALT PAVE MILLING & TEXTURING	152.00	TON
0235	24970EC	ASPHALT MATERIAL FOR TACK NON-TRACKING	1.00	TON
0240	01921	STANDARD BARRIER MEDIAN TYPE 4	65.00	SQYD
0245	02562	TEMPORARY SIGNS	91.00	SQFT
0250	02650	MAINTAIN & CONTROL TRAFFIC - (FAYETTE US 27 @ W LOUDON AVE)	1.00	LS
0255	02671	PORTABLE CHANGEABLE MESSAGE SIGN	2.00	EACH
0260	02705	SILT TRAP TYPE C	4.00	EACH
0265	02708	CLEAN SILT TRAP TYPE C	4.00	EACH
0270	02726	STAKING - (FAYETTE US 27 @ W LOUDON AVE)	1.00	LS
0275	03225	TUBULAR MARKERS - (PEXCO CITY POST EMBEDDED ANCHOR CUP)	15.00	EACH
0280	06406	SBM ALUM SHEET SIGNS .080 IN	7.50	SQFT
0285	06410	STEEL POST TYPE 1	14.00	LF
0290	06510	PAVE STRIPING-TEMP PAINT-4 IN	700.00	LF
0295	06540	PAVE STRIPING-THERMO-4 IN W	405.00	LF
0300	06541	PAVE STRIPING-THERMO-4 IN Y	1,466.00	LF
0305	06568	PAVE MARKING-THERMO STOP BAR-24IN	33.00	LF
0310	06569	PAVE MARKING-THERMO CROSS-HATCH	250.00	SQFT
0315	06574	PAVE MARKING-THERMO CURV ARROW	2.00	EACH
0320	21596ND	GMSS TYPE D - SURFACE MOUNT	2.00	EACH
0325	22664EN	WATER BLASTING EXISTING STRIPE	112.00	LF
0330	23608EC	YELLOW PAINT FOR MEDIAN SAFETY NOSE	6.00	SQFT
0335	24189ER	DURABLE WATERBORNE MARKING-6 IN W	998.00	LF
0340	24190ER	DURABLE WATERBORNE MARKING-6 IN Y	738.00	LF
0345	24489EC	INLAID PAVEMENT MARKER	21.00	EACH
0350	24631EC	BARCODE SIGN INVENTORY	2.00	EACH
0355	24683ED	PAVE MARKING-THERMO DOTTED LANE EXTEN - (6 INCH WIDTH)	17.00	LF
0360	04792	CONDUIT-1 IN	10.00	LF
0365	04811	ELECTRICAL JUNCTION BOX TYPE B	1.00	EACH
0370	04830	LOOP WIRE	300.00	LF
0375	04844	CABLE-NO. 14/5C	260.00	LF
0380	04850	CABLE-NO. 14/1 PAIR	250.00	LF
0385	04895	LOOP SAW SLOT AND FILL	150.00	LF
0390	20188NS835	INSTALL LED SIGNAL-3 SECTION	2.00	EACH
0395	24963ED	LOOP TEST	1.00	EACH
0400	02569	DEMOBILIZATION	1.00	LS

# MATERIAL SUMMARY

**CONTRACT ID: 224434**

**121GR22T008-HSIP**

**0703400272005**

NORTH BROADWAY (US 27) IMPROVEMENTS AT THE INTERSECTION OF US 27 AND HAGGARD LANE SIGNS-LIGHTING-SIGNALS, A DISTANCE OF .38 MILES.

Project Line No	Bid Code	DESCRIPTION	Quantity	Unit
0105	02676	MOBILIZATION FOR MILL & TEXT - (7-9012.70)	1.00	LS
0110	02677	ASPHALT PAVE MILLING & TEXTURING	5.00	TON
0115	20550ND	SAWCUT PAVEMENT	148.00	LF
0120	01921	STANDARD BARRIER MEDIAN TYPE 4	59.00	SQYD
0125	02650	MAINTAIN & CONTROL TRAFFIC - (7-9012.70)	1.00	LS
0130	02704	SILT TRAP TYPE B	4.00	EACH
0135	02705	SILT TRAP TYPE C	2.00	EACH
0140	02707	CLEAN SILT TRAP TYPE B	4.00	EACH
0145	02708	CLEAN SILT TRAP TYPE C	2.00	EACH
0150	02726	STAKING - (7-9012.70)	1.00	LS
0155	06406	SBM ALUM SHEET SIGNS .080 IN	30.00	SQFT
0160	06410	STEEL POST TYPE 1	32.00	LF
0165	06514	PAVE STRIPING-PERM PAINT-4 IN	550.00	LF
0170	06574	PAVE MARKING-THERMO CURV ARROW	1.00	EACH
0175	06575	PAVE MARKING-THERMO COMB ARROW	4.00	EACH
0180	22680EN	QWICK CURB MEDIAN SEPARATOR	103.00	LF
0185	06472	INSTALL SPAN MOUNTED SIGN	1.00	EACH
0190	20188NS835	INSTALL LED SIGNAL-3 SECTION	8.00	EACH
0195	20266ES835	INSTALL LED SIGNAL- 4 SECTION	1.00	EACH
0200	24955ED	REMOVE SIGNAL EQUIPMENT - (7-9012.70 US 27 AT HAGGARD LN)	1.00	EACH
0210	24955ED	REMOVE SIGNAL EQUIPMENT - (7-9012.70 US 27 AT I-75 SB RAMP ON RAMP)	1.00	EACH
0215	02569	DEMOBILIZATION	1.00	LS

**CONTRACT ID: 224434**

**121GR22T008-HSIP**

**0703400682101**

HARRODSBURG RD (US 68) IMPROVEMENTS AT THE INTERSECTION OF HARRODSBURG RD (US 68) AND FT HARRODS RD ASPHALT SURFACE WITH GRADE & DRAIN.

Project Line No	Bid Code	DESCRIPTION	Quantity	Unit
0545	00216	CL3 ASPH BASE 1.00D PG76-22	350.00	TON
0550	00336	CL3 ASPH SURF 0.38A PG76-22	160.00	TON
0555	02676	MOBILIZATION FOR MILL & TEXT - (FAYETTE US 68 @ FT HARRODS DR)	1.00	LS
0560	02677	ASPHALT PAVE MILLING & TEXTURING	120.00	TON
0565	24785EC	FIBER REINFORCEMENT FOR HMA	435.00	TON
0570	24970EC	ASPHALT MATERIAL FOR TACK NON-TRACKING	1.50	TON
0575	00001	DGA BASE	274.00	TON
0580	01000	PERFORATED PIPE-4 IN	410.00	LF

## MATERIAL SUMMARY

Project Line No	Bid Code	DESCRIPTION	Quantity	Unit
0585	01010	NON-PERFORATED PIPE-4 IN	20.00	LF
0590	01020	PERF PIPE HEADWALL TY 1-4 IN	2.00	EACH
0595	01811	STANDARD CURB AND GUTTER MOD - LFUCG CURB AND GUTTER TYPE 1	261.00	LF
0600	01812	REMOVE CURB AND GUTTER	249.00	LF
0605	02159	TEMP DITCH	500.00	LF
0610	02160	CLEAN TEMP DITCH	250.00	LF
0615	02200	ROADWAY EXCAVATION	416.00	CUYD
0620	02562	TEMPORARY SIGNS	119.00	SQFT
0625	02604	FABRIC-GEOTEXTILE CLASS 1A	571.00	SQYD
0630	02607	FABRIC-GEOTEXTILE CLASS 2 FOR PIPE	180.00	SQYD
0635	02650	MAINTAIN & CONTROL TRAFFIC - (FAYETTE US 68 @ FT HARRODS DR)	1.00	LS
0640	02671	PORTABLE CHANGEABLE MESSAGE SIGN	2.00	EACH
0645	02696	SHOULDER RUMBLE STRIPS	225.00	LF
0650	02701	TEMP SILT FENCE	500.00	LF
0655	02703	SILT TRAP TYPE A	1.00	EACH
0660	02704	SILT TRAP TYPE B	1.00	EACH
0665	02705	SILT TRAP TYPE C	1.00	EACH
0670	02706	CLEAN SILT TRAP TYPE A	1.00	EACH
0675	02707	CLEAN SILT TRAP TYPE B	1.00	EACH
0680	02708	CLEAN SILT TRAP TYPE C	1.00	EACH
0685	02720	SIDEWALK-4 IN CONCRETE	61.00	SQYD
0690	02721	REMOVE CONCRETE SIDEWALK	27.00	SQYD
0695	02726	STAKING - (FAYETTE US 68 @ FT HARRODS DR)	1.00	LS
0700	05950	EROSION CONTROL BLANKET	525.00	SQYD
0705	05952	TEMP MULCH	900.00	SQYD
0710	05953	TEMP SEEDING AND PROTECTION	675.00	SQYD
0715	05963	INITIAL FERTILIZER	.08	TON
0720	05964	MAINTENANCE FERTILIZER	.05	TON
0725	05985	SEEDING AND PROTECTION	525.00	SQYD
0730	05990	SODDING	80.00	SQYD
0735	05992	AGRICULTURAL LIMESTONE	.07	TON
0740	06407	SBM ALUM SHEET SIGNS .125 IN	10.00	SQFT
0745	06410	STEEL POST TYPE 1	25.00	LF
0750	06540	PAVE STRIPING-THERMO-4 IN W	220.00	LF
0755	06541	PAVE STRIPING-THERMO-4 IN Y	342.00	LF
0760	06566	PAVE MARKING-THERMO X-WALK-12 IN	487.00	LF
0765	06568	PAVE MARKING-THERMO STOP BAR-24IN	188.00	LF
0770	06574	PAVE MARKING-THERMO CURV ARROW	11.00	EACH
0775	06575	PAVE MARKING-THERMO COMB ARROW	2.00	EACH
0780	06598	PAVEMENT MARKING REMOVAL	227.00	SQFT
0785	20550ND	SAWCUT PAVEMENT	813.00	LF
0790	21597EN	REMOVE PERF PIPE HEADWALL	1.00	EACH
0795	22664EN	WATER BLASTING EXISTING STRIPE	83.00	LF
0800	23055N	REMOVE - BRICK MAILBOX (7-9006.30)	1.00	LS
0805	23158ES505	DETECTABLE WARNINGS	60.00	SQFT
0810	24189ER	DURABLE WATERBORNE MARKING-6 IN W	910.00	LF
0815	24190ER	DURABLE WATERBORNE MARKING-6 IN Y	684.00	LF
0820	24489EC	INLAID PAVEMENT MARKER	28.00	EACH
0825	24631EC	BARCODE SIGN INVENTORY	1.00	EACH

## MATERIAL SUMMARY

Project Line No	Bid Code	DESCRIPTION	Quantity	Unit
0830	24679ED	PAVE MARK THERMO CHEVRON	487.00	SQFT
0835	24683ED	PAVE MARKING-THERMO DOTTED LANE EXTEN	58.00	LF
0840	04793	CONDUIT-1 1/4 IN	38.00	LF
0845	04811	ELECTRICAL JUNCTION BOX TYPE B - (REVISED 5-23-22)	1.00	EACH
0850	04830	LOOP WIRE	2,404.00	LF
0855	04844	CABLE-NO. 14/5C	940.00	LF
0860	04850	CABLE-NO. 14/1 PAIR	340.00	LF
0865	04895	LOOP SAW SLOT AND FILL	862.00	LF
0870	20093NS835	INSTALL PEDESTRIAN HEAD-LED	6.00	EACH
0875	20188NS835	INSTALL LED SIGNAL-3 SECTION	4.00	EACH
0880	20189NS835	INSTALL LED SIGNAL-5 SECTION	1.00	EACH
0885	20266ES835	INSTALL LED SIGNAL- 4 SECTION	2.00	EACH
0890	21659NN	RELOCATE SIGNAL HEAD	2.00	EACH
0895	21743NN	INSTALL PEDESTRIAN DETECTOR	6.00	EACH
0900	23222EC	INSTALL SIGNAL PEDESTAL	2.00	EACH
0905	23556NC	ADJUST LIGHTING JUNCTION BOX	1.00	EACH
0910	24955ED	REMOVE SIGNAL EQUIPMENT - (7-9006.30 US 68 AT FT HARRODS)	1.00	EACH
0915	24963ED	LOOP TEST	5.00	EACH
0920	00524	STORM SEWER PIPE-24 IN	111.00	LF
0925	01310	REMOVE PIPE	13.00	LF
0930	01514	DROP BOX INLET TYPE 5E	1.00	EACH
0935	01571	DROP BOX INLET TYPE 13ST - (TOP PHASE)	1.00	EACH
0940	01584	CAP DROP BOX INLET	1.00	EACH
0945	01718	REMOVE INLET - (TOP PHASE ONLY)	1.00	EACH
0950	23610NC	CORED HOLE DRAINAGE BOX CON - (24 INCH)	1.00	EACH
0955	23610NC	CORED HOLE DRAINAGE BOX CON - (4 INCH)	1.00	EACH
0960	02569	DEMOBILIZATION	1.00	LS
0965	04792	CONDUIT-1 IN - (RIGID STEEL) (ADDED 5/23/22)	60.00	LF
0970	24901EC	PVC CONDUIT-2 IN-SCHEDULE 80 - (ADDED 5-23-22)	12.00	LF

# MATERIAL SUMMARY

**CONTRACT ID: 224434**

**121GR22T008-HSIP**

**0703445242001**

MAN O WAR BLVD (CS 4524) IMPROVEMENTS AT THE INTERSECTION OF MAN O WAR BLVD (CS 4524) AND PARKERS MILL RD SIGNS-LIGHTING-SIGNALS, A DISTANCE OF .2 MILES.

Project Line No	Bid Code	DESCRIPTION	Quantity	Unit
0405	01810	STANDARD CURB AND GUTTER	126.00	LF
0410	01812	REMOVE CURB AND GUTTER	126.00	LF
0415	02562	TEMPORARY SIGNS	91.00	SQFT
0420	02650	MAINTAIN & CONTROL TRAFFIC - (FAYETTE MAN O' WAR BLVD @ PARKERS MILL RD)	1.00	LS
0425	02671	PORTABLE CHANGEABLE MESSAGE SIGN	2.00	EACH
0430	02720	SIDEWALK-4 IN CONCRETE	58.00	SQYD
0435	02721	REMOVE CONCRETE SIDEWALK	147.00	SQYD
0440	02726	STAKING - (FAYETTE MAN O' WAR BLVD @ PARKERS MILL RD)	1.00	LS
0445	05990	SODDING	92.00	SQYD
0450	06406	SBM ALUM SHEET SIGNS .080 IN	18.00	SQFT
0455	06410	STEEL POST TYPE 1	24.00	LF
0460	06540	PAVE STRIPING-THERMO-4 IN W	124.00	LF
0465	06541	PAVE STRIPING-THERMO-4 IN Y	184.00	LF
0470	06566	PAVE MARKING-THERMO X-WALK-12 IN	136.00	LF
0475	06568	PAVE MARKING-THERMO STOP BAR-24IN	90.00	LF
0480	06569	PAVE MARKING-THERMO CROSS-HATCH	55.00	SQFT
0485	06598	PAVEMENT MARKING REMOVAL	247.00	SQFT
0490	21417ES717	PAVE MARK THERMO CONE CAP-SOLID YELLOW	90.00	SQFT
0495	23158ES505	DETECTABLE WARNINGS	16.00	SQFT
0500	24631EC	BARCODE SIGN INVENTORY	2.00	EACH
0505	02701	TEMP SILT FENCE	300.00	LF
0510	02705	SILT TRAP TYPE C	2.00	EACH
0515	02708	CLEAN SILT TRAP TYPE C	2.00	EACH
0520	04844	CABLE-NO. 14/5C	1,300.00	LF
0525	20188NS835	INSTALL LED SIGNAL-3 SECTION	10.00	EACH
0530	20266ES835	INSTALL LED SIGNAL- 4 SECTION	2.00	EACH
0535	24955ED	REMOVE SIGNAL EQUIPMENT - (FAYETTE MAN O' WAR BLVD @ PARKERS MILL RD)	1.00	EACH
0540	02569	DEMOBILIZATION	1.00	LS

**CONTRACT ID: 224434**

**121GR22T008-HSIP**

**0705700272101**

NICHOLASVILLE BYPASS (US 27) IMPROVEMENTS AT THE INTERSECTION OF NICHOLASVILLE BYPASS (US 27) AND EDGEWOOD DR ASPHALT SURFACE WITH GRADE & DRAIN, A DISTANCE OF .4 MILES.

Project Line No	Bid Code	DESCRIPTION	Quantity	Unit
0965	00100	ASPHALT SEAL AGGREGATE	1.80	TON
0970	00103	ASPHALT SEAL COAT	.40	TON



# MATERIAL SUMMARY

Project Line No	Bid Code	DESCRIPTION	Quantity	Unit
0975	00190	LEVELING & WEDGING PG64-22	4.00	TON
0980	00214	CL3 ASPH BASE 1.00D PG64-22	490.00	TON
0985	02676	MOBILIZATION FOR MILL & TEXT - (JESSAMINE US 27 @ EDGEWOOD DR)	1.00	LS
0990	02677	ASPHALT PAVE MILLING & TEXTURING	68.00	TON
0995	22906ES403	CL3 ASPH SURF 0.38A PG64-22	121.00	TON
1000	24970EC	ASPHALT MATERIAL FOR TACK NON-TRACKING	1.20	TON
1005	00001	DGA BASE	324.00	TON
1010	00078	CRUSHED AGGREGATE SIZE NO 2	230.00	TON
1015	01810	STANDARD CURB AND GUTTER	110.00	LF
1020	01917	STANDARD BARRIER MEDIAN TYPE 2	37.00	SQYD
1025	02200	ROADWAY EXCAVATION	297.00	CUYD
1030	02562	TEMPORARY SIGNS	200.00	SQFT
1035	02602	FABRIC-GEOTEXTILE CLASS 1	710.00	SQYD
1040	02650	MAINTAIN & CONTROL TRAFFIC - (JESSAMINE US 27 @ EDGEWOOD DR)	1.00	LS
1045	02671	PORTABLE CHANGEABLE MESSAGE SIGN	2.00	EACH
1050	02701	TEMP SILT FENCE	245.00	LF
1055	02704	SILT TRAP TYPE B	2.00	EACH
1060	02705	SILT TRAP TYPE C	4.00	EACH
1065	02707	CLEAN SILT TRAP TYPE B	2.00	EACH
1070	02708	CLEAN SILT TRAP TYPE C	4.00	EACH
1075	02720	SIDEWALK-4 IN CONCRETE	134.00	SQYD
1080	02726	STAKING - (JESSAMINE US 27 @ EDGEWOOD DR)	1.00	LS
1085	02775	ARROW PANEL	1.00	EACH
1090	05950	EROSION CONTROL BLANKET	479.00	SQYD
1095	05953	TEMP SEEDING AND PROTECTION	60.00	SQYD
1100	05963	INITIAL FERTILIZER	.10	TON
1105	05964	MAINTENANCE FERTILIZER	.10	TON
1110	05985	SEEDING AND PROTECTION	1,151.00	SQYD
1115	05990	SODDING	50.00	SQYD
1120	05992	AGRICULTURAL LIMESTONE	.80	TON
1125	06406	SBM ALUM SHEET SIGNS .080 IN	20.00	SQFT
1130	06410	STEEL POST TYPE 1	54.00	LF
1135	06540	PAVE STRIPING-THERMO-4 IN W	1,113.00	LF
1140	06541	PAVE STRIPING-THERMO-4 IN Y	960.00	LF
1145	06542	PAVE STRIPING-THERMO-6 IN W	1,210.00	LF
1150	06543	PAVE STRIPING-THERMO-6 IN Y	452.00	LF
1155	06547	PAVE STRIPING-THERMO-12 IN Y	16.00	LF
1160	06568	PAVE MARKING-THERMO STOP BAR-24IN	203.00	LF
1165	06574	PAVE MARKING-THERMO CURV ARROW	12.00	EACH
1170	06575	PAVE MARKING-THERMO COMB ARROW	4.00	EACH
1175	06598	PAVEMENT MARKING REMOVAL	246.00	SQFT
1180	20550ND	SAWCUT PAVEMENT	568.00	LF
1185	21373ND	REMOVE SIGN	2.00	EACH
1190	23158ES505	DETECTABLE WARNINGS	52.00	SQFT
1195	23261EC	PAVE MARK-THERMO-X-WALK-24 IN	150.00	LF
1200	23875NC	REMOVE THERMOPLASTIC ARROWS	2.00	EACH
1205	24489EC	INLAID PAVEMENT MARKER	22.00	EACH
1210	24631EC	BARCODE SIGN INVENTORY	2.00	EACH
1215	24679ED	PAVE MARK THERMO CHEVRON	613.00	SQFT

## MATERIAL SUMMARY

Project Line No	Bid Code	DESCRIPTION	Quantity	Unit
1220	00522	STORM SEWER PIPE-18 IN	28.00	LF
1225	01511	DROP BOX INLET TYPE 5D	1.00	EACH
1230	01584	CAP DROP BOX INLET	1.00	EACH
1235	04792	CONDUIT-1 IN	30.00	LF
1240	04811	ELECTRICAL JUNCTION BOX TYPE B	2.00	EACH
1245	04830	LOOP WIRE	1,251.00	LF
1250	04844	CABLE-NO. 14/5C	670.00	LF
1255	04850	CABLE-NO. 14/1 PAIR	1,210.00	LF
1260	04886	MESSENGER-15400 LB	36.00	LF
1265	20188NS835	INSTALL LED SIGNAL-3 SECTION	8.00	EACH
1270	20266ES835	INSTALL LED SIGNAL- 4 SECTION	2.00	EACH
1275	21743NN	INSTALL PEDESTRIAN DETECTOR	2.00	EACH
1280	23235EC	INSTALL PEDESTAL POST	2.00	EACH
1285	24900EC	PVC CONDUIT-1 1/4 IN-SCHEDULE 80	60.00	LF
1290	24955ED	REMOVE SIGNAL EQUIPMENT - (7-9012.90 US 27 AT EDGEWOOD DRIVE)	1.00	EACH
1295	02569	DEMOBILIZATION	1.00	LS
1300	04895	LOOP SAW SLOT AND FILL - (ADDED 5-11-22)	575.00	LF

**US 68 (HARRODSBURG RD) MP 2.403  
ITEM NO. 7-9006.30  
GENERAL SUMMARY**

ITEM	DESCRIPTION	UNIT	QUANTITY
1	DGA BASE (1)	TON	274
216	CL3 ASPH BASE 1.00D PG76-22 (1)	TON	350
332	CL3 ASPH SURF 0.50A PG76-22 (1)	TON	160
524	STORM SEWER PIPE-24 IN (2)	LF	111
1000	PERFORATED PIPE-4 IN (9)	LF	410
1010	NON-PERFORATED PIPE-4 IN (9)	LF	20
1020	PERF PIPE HEADWALL TY 1-4 IN (9)	EACH	2
1310	REMOVE PIPE (2)	LF	13
1514	DROP BOX INLET TYPE 5E (2)	EACH	1
1571	DROP BOX INLET TYPE 13ST (TOP PHASE) (2)	EACH	1
1584	CAP DROP BOX INLET (2)	EACH	1
1718	REMOVE INLET (TOP PHASE ONLY) (2)	EACH	1
1811	STANDARD CURB AND GUTTER (MOD) (LFUCG CURB AND GUTTER TYPE 1) (3)	LF	261
1812	REMOVE CURB AND GUTTER (3)	LF	249
2159	TEMP DITCH	LF	500
2160	CLEAN TEMP DITCH	LF	250
2200	ROADWAY EXCAVATION	CUYD	416
2562	TEMPORARY SIGNS	SQFT	119
2569	DEMOBILIZATION	LS	1
2604	FABRIC-GEOTEXTILE CLASS 1A (1)	SQYD	571
2607	FABRIC-GEOTEXTILE CLASS 2 FOR PIPE (9)	SQYD	180
2650	MAINTAIN & CONTROL TRAFFIC (US 68 @ CS 4328)	LS	1
2671	PORTABLE CHANGEABLE MESSAGE SIGN	EACH	2
2676	MOBILIZATION FOR MILL & TEXT	LS	1
2677	ASPHALT PAVE MILLING & TEXTURING (1)	TON	120
2696	SHOULDER RUMBLE STRIPS (4)	LF	225
2701	TEMP SILT FENCE	LF	500
2703	SILT TRAP TYPE A	EACH	1
2704	SILT TRAP TYPE B	EACH	1
2705	SILT TRAP TYPE C	EACH	1
2706	CLEAN SILT TRAP TYPE A	EACH	1
2707	CLEAN SILT TRAP TYPE B	EACH	1
2708	CLEAN SILT TRAP TYPE C	EACH	1
2720	SIDEWALK-4 IN CONCRETE (3)	SQYD	61
2721	REMOVE CONCRETE SIDEWALK (3)	SQYD	27
2726	STAKING (US 68 @ CS 4328)	LS	1
4792	CONDUIT-1 IN (RIGID STEEL) (7)	LF	60
4793	CONDUIT-1 1/4 IN (7)	LF	38
4811	ELECTRICAL JUNCTION BOX TYPE B (7)	EACH	1
4830	LOOP WIRE (7)	LF	2404
4844	CABLE-NO. 14/5C (7)	LF	940
4850	CABLE-NO. 14/1 PAIR (7)	LF	340
4895	LOOP SAW SLOT AND FILL (7)	LF	862

- (1) QUANTITY CARRIED OVER FROM PAVEMENT SUMMARY
- (2) QUANTITY CARRIED OVER FROM DRAINAGE SUMMARY
- (3) QUANTITY CARRIED OVER FROM SIDEWALK AND CURB AND GUTTER SUMMARY
- (4) QUANTITY CARRIED OVER FROM RUMBLE STRIP AND PAVEMENT MARKER SUMMARY
- (5) QUANTITY CARRIED OVER FROM STRIPING AND PAVEMENT MARKING SUMMARY
- (6) QUANTITY CARRIED OVER FROM MARKING REMOVAL AND WATERBLASTING SUMMARY
- (7) QUANTITY CARRIED OVER FROM SIGNAL SUMMARY
- (8) QUANTITY CARRIED OVER FROM SIGN SUMMARY
- (9) QUANTITY TO BE USED FOR EDGE DRAINS AT DIRECTION OF ENGINEER

**US 68 (HARRODSBURG RD) MP 2.403  
ITEM NO. 7-9006.30  
GENERAL SUMMARY**

ITEM	DESCRIPTION	UNIT	QUANTITY
4950	REMOVE SIGNAL EQUIPMENT (7)	EACH	1
5950	EROSION CONTROL BLANKET	SQYD	525
5952	TEMP MULCH	SQYD	900
5953	TEMP SEEDING AND PROTECTION	SQYD	675
5963	INITIAL FERTILIZER	SQYD	0.08
5964	MAINTENANCE FERTILIZER	SQYD	0.05
5985	SEEDING AND PROTECTION	SQYD	525
5990	SODDING (3)	SQYD	80
5992	AGRICULTURAL LIMESTONE	TON	0.07
6407	SBM ALUM SHEET SIGNS .125 IN (8)	SQFT	10
6410	STEEL POST TYPE 1 (8)	LF	25
6540	PAVE STRIPING-THERMO-4 IN W (5)	LF	220
6541	PAVE STRIPING-THERMO-4 IN Y (5)	LF	342
6566	PAVE MARKING-THERMO X-WALK-12 IN (5)	LF	487
6568	PAVE MARKING-THERMO STOP BAR-24 IN (5)	LF	188
6574	PAVE MARKING-THERMO CURV ARROW (5)	EACH	11
6575	PAVE MARKING-THERMO COMB ARROW (5)	EACH	2
6598	PAVEMENT MARKING REMOVAL (6)	SQFT	227
20093NS835	INSTALL PEDESTRIAN HEAD-LED (7)	EACH	6
20188NS835	INSTALL LED SIGNAL-3 SECTION (7)	EACH	4
20189NS835	INSTALL LED SIGNAL-5 SECTION (7)	EACH	1
20266ES835	INSTALL LED SIGNAL-4 SECTION (7)	EACH	2
20550ND	SAWCUT PAVEMENT (1)	LF	813
21597EN	REMOVE PERF PIPE HEADWALL (9)	EACH	1
21659NN	RELOCATE SIGNAL HEAD (7)	EACH	2
21743NN	INSTALL PEDESTRIAN DETECTOR (7)	EACH	6
22664EN	WATER BLASTING EXISTING STRIPE (6)	LF	83
23158ES505	DETECTABLE WARNINGS (3)	SQFT	60
23055N	REMOVE (BRICK MAILBOX)	LS	1
23222EC	INSTALL SIGNAL PEDESTAL (7)	EACH	2
23556NC	ADJUST LIGHTING JUNCTION BOX (7)	EACH	1
23610NC	CORED HOLE DRAINAGE BOX CON (4") (9)	EACH	1
23610NC	CORED HOLE DRAINAGE BOX CON (24") (2)	EACH	1
24189ER	DURABLE WATERBORNE MARKING-6 IN W (5)	LF	910
24190ER	DURABLE WATERBORNE MARKING-6 IN Y (5)	LF	684
24489EC	INLAID PAVEMENT MARKER (4)	EACH	28
24631EC	BARCODE SIGN INVENTORY (8)	EACH	1
24679ED	PAVE MARK THERMO CHEVRON (5)	SQFT	487
24683ED	PAVE MARKING-THERMO DOTTED LANE EXTEN (5)	LF	58
24785EC	FIBER REINFORCEMENT FOR HMA (1)	TON	435
24963ED	LOOP TEST (7)	EACH	5
24901EC	PVC CONDUIT-2 IN-SCHEDULE 80 (7)	LF	12
24970EC	ASPHALT MATERIAL FOR TACK NON-TRACKING (1)	TON	1.5

- (1) QUANTITY CARRIED OVER FROM PAVEMENT SUMMARY
- (2) QUANTITY CARRIED OVER FROM DRAINAGE SUMMARY
- (3) QUANTITY CARRIED OVER FROM SIDEWALK AND CURB AND GUTTER SUMMARY
- (4) QUANTITY CARRIED OVER FROM RUMBLE STRIP AND PAVEMENT MARKER SUMMARY
- (5) QUANTITY CARRIED OVER FROM STRIPING AND PAVEMENT MARKING SUMMARY
- (6) QUANTITY CARRIED OVER FROM MARKING REMOVAL AND WATERBLASTING SUMMARY
- (7) QUANTITY CARRIED OVER FROM SIGNAL SUMMARY
- (8) QUANTITY CARRIED OVER FROM SIGN SUMMARY
- (9) QUANTITY TO BE USED FOR EDGE DRAINS AT DIRECTION OF ENGINEER

INSTALL SIGNAL HEADS		
Station*	Offset*	Description
<b>Fort Harrods Drive Stationing</b>		
09+24	13' LT	5-section LED signal head
09+66	37' RT	3-Section LED signal head with reflective backplate
09+78	37' RT	3-Section LED signal head with reflective backplate
10+07	36' RT	4-section LED signal head with reflective backplate
09+95	32' LT	4-section LED signal head with reflective backplate
10+24	30' LT	3-Section LED signal head with reflective backplate
10+36	29' LT	3-Section LED signal head with reflective backplate

\*Station and Offset are approximate and for information only. Align signal heads with existing span wires and driving lanes.

RELOCATE SIGNAL HEADS				
From Station*	From Offset*	To Station*	To Offset*	Description
<b>Fort Harrods Drive Stationing</b>				
9+24	7' LT	9+24	4' LT	4-section signal head
9+24	0'	9+24	5' RT	3-section signal head

\*Station and Offset are approximate and for information only. Align signal heads with existing span wires and driving lanes.

PEDESTRIAN SIGNAL QUANTITIES						
<b>Fort Harrods Drive Stationing</b>						
09+23	37' RT	--	--	INSTALL PEDESTRIAN HEAD-LED	EACH	1
				INSTALL PEDESTRIAN DETECTOR	EACH	1
09+25	37' LT	--	--	INSTALL PEDESTRIAN HEAD-LED	EACH	1
				INSTALL PEDESTRIAN DETECTOR	EACH	1
09+40	55' LT	--	--	INSTALL PEDESTRIAN SIGNAL PEDESTAL	EACH	1
				INSTALL PEDESTRIAN HEAD-LED	EACH	1
				INSTALL PEDESTRIAN DETECTOR	EACH	1
10+57	46' LT	--	--	INSTALL PEDESTRIAN SIGNAL PEDESTAL	EACH	1
				INSTALL PEDESTRIAN HEAD-LED	EACH	1
				INSTALL PEDESTRIAN DETECTOR	EACH	1
10+79	26' LT	--	--	INSTALL PEDESTRIAN HEAD-LED	EACH	1
				INSTALL PEDESTRIAN DETECTOR	EACH	1
10+80	35' RT	--	--	INSTALL PEDESTRIAN HEAD-LED	EACH	1
				INSTALL PEDESTRIAN DETECTOR	EACH	1

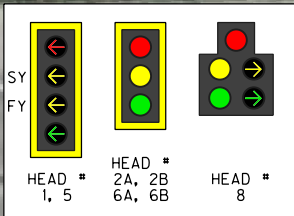
Note: These numbers are for estimate purposes only. Final locations and quantities will be determined by the Engineer in the field.

Item	Description	Unit	Quantity
4792	CONDUIT-1 IN (RIGID STEEL)	LF	60
4793	CONDUIT-1 1/4 IN	LF	38
4811	ELECTRICAL JUNCTION BOX TYPE B	EACH	1
4830	LOOP WIRE	LF	2404
4844	CABLE-NO. 14/5C	LF	940
4850	CABLE-NO. 14-1 PAIR	LF	340
4895	LOOP SAW SLOT AND FILL	LF	862
4950	REMOVE SIGNAL EQUIPMENT	EACH	1
20093NS835	INSTALL PEDESTRIAN HEAD-LED	EACH	6
20188NS83	INSTALL LED SIGNAL-3 SECTION	EACH	4
20189NS835	INSTALL LED SIGNAL-5 SECTION	EACH	1
20266ES835	INSTALL LED SIGNAL-4 SECTION	EACH	2
21659NN	RELOCATE SIGNAL HEAD	EACH	2
21743NN	INSTALL PEDESTRIAN DETECTOR	EACH	6
23222EC	INSTALL SIGNAL PEDESTAL	EACH	2
24693ED	LOOP TEST	EACH	5
24901EC	PVC CONDUIT-2 IN-SCHEDULE 80	LF	12

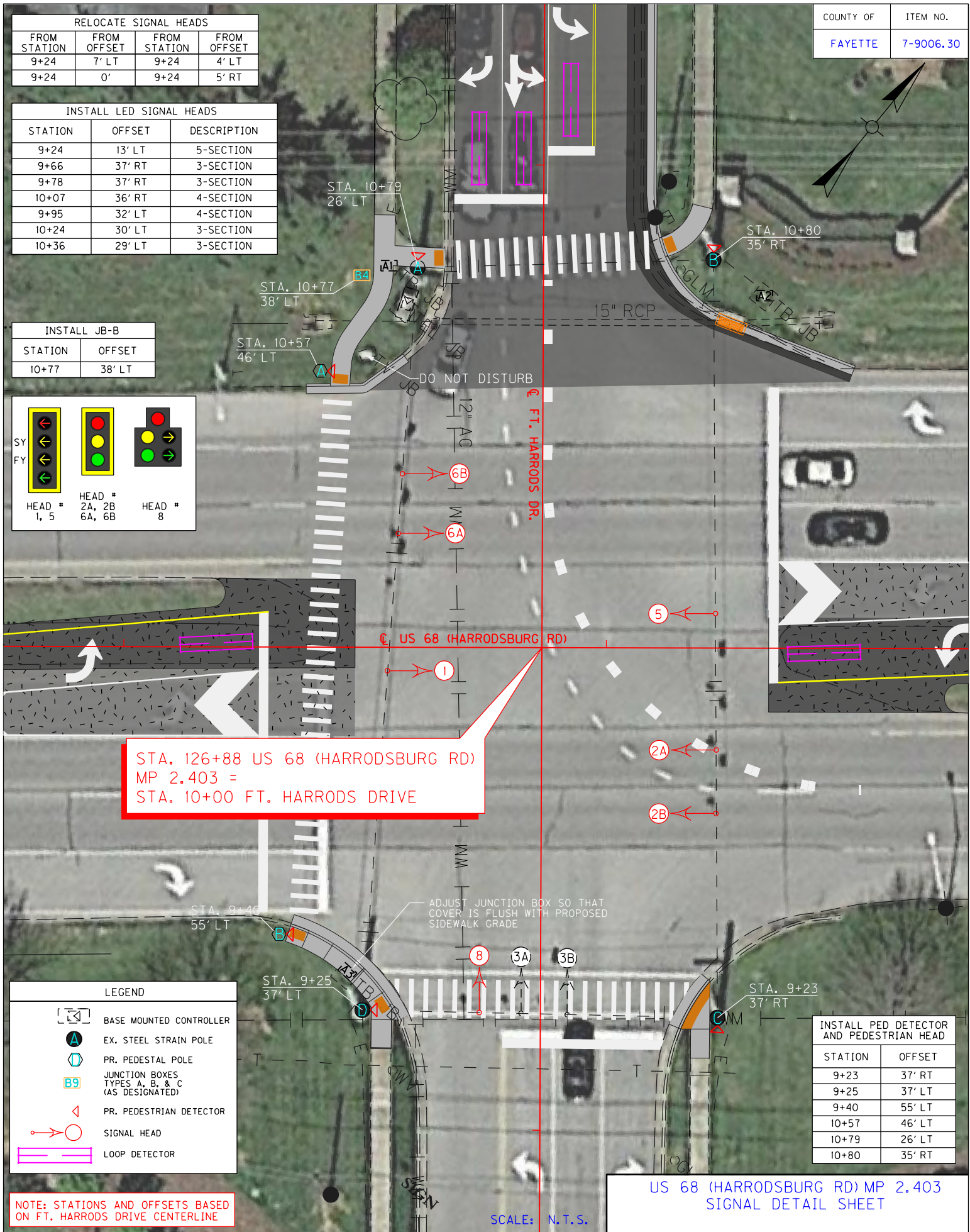
RELOCATE SIGNAL HEADS			
FROM STATION	FROM OFFSET	FROM STATION	FROM OFFSET
9+24	7' LT	9+24	4' LT
9+24	0'	9+24	5' RT

INSTALL LED SIGNAL HEADS		
STATION	OFFSET	DESCRIPTION
9+24	13' LT	5-SECTION
9+66	37' RT	3-SECTION
9+78	37' RT	3-SECTION
10+07	36' RT	4-SECTION
9+95	32' LT	4-SECTION
10+24	30' LT	3-SECTION
10+36	29' LT	3-SECTION

INSTALL JB-B	
STATION	OFFSET
10+77	38' LT



COUNTY OF	ITEM NO.
FAYETTE	7-9006.30



STA. 126+88 US 68 (HARRODSBURG RD)  
MP 2.403 =  
STA. 10+00 FT. HARRODS DRIVE

INSTALL PED DETECTOR AND PEDESTRIAN HEAD	
STATION	OFFSET
9+23	37' RT
9+25	37' LT
9+40	55' LT
10+57	46' LT
10+79	26' LT
10+80	35' RT

NOTE: STATIONS AND OFFSETS BASED ON FT. HARRODS DRIVE CENTERLINE

US 68 (HARRODSBURG RD) MP 2.403  
SIGNAL DETAIL SHEET

SCALE: N.T.S.



COUNTY OF	ITEM NO.
FAYETTE	7-9006.30

INSTALL JUNCTION BOX B4.

INSTALL 1-1" RIGID STEEL CONDUIT FOR TRANSITION OF LOOPS IN THE PAVEMENT TO JUNCTION BOX B4 PER KYTC LOOP DETAILS.

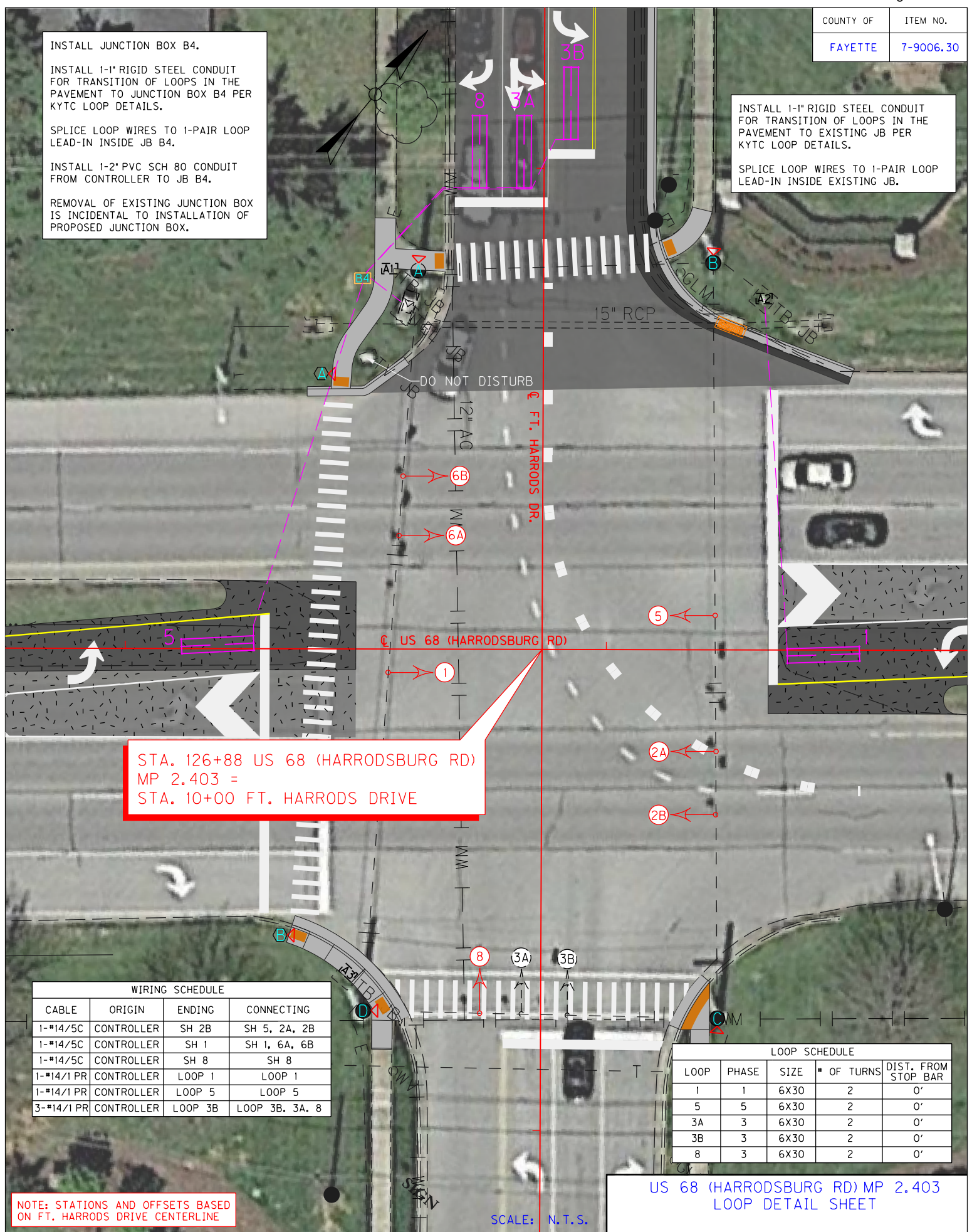
SPLICE LOOP WIRES TO 1-PAIR LOOP LEAD-IN INSIDE JB B4.

INSTALL 1-2" PVC SCH 80 CONDUIT FROM CONTROLLER TO JB B4.

REMOVAL OF EXISTING JUNCTION BOX IS INCIDENTAL TO INSTALLATION OF PROPOSED JUNCTION BOX.

INSTALL 1-1" RIGID STEEL CONDUIT FOR TRANSITION OF LOOPS IN THE PAVEMENT TO EXISTING JB PER KYTC LOOP DETAILS.

SPLICE LOOP WIRES TO 1-PAIR LOOP LEAD-IN INSIDE EXISTING JB.



STA. 126+88 US 68 (HARRODSBURG RD)  
MP 2.403 =  
STA. 10+00 FT. HARRODS DRIVE

WIRING SCHEDULE			
CABLE	ORIGIN	ENDING	CONNECTING
1-#14/5C	CONTROLLER	SH 2B	SH 5, 2A, 2B
1-#14/5C	CONTROLLER	SH 1	SH 1, 6A, 6B
1-#14/5C	CONTROLLER	SH 8	SH 8
1-#14/1 PR	CONTROLLER	LOOP 1	LOOP 1
1-#14/1 PR	CONTROLLER	LOOP 5	LOOP 5
3-#14/1 PR	CONTROLLER	LOOP 3B	LOOP 3B, 3A, 8

LOOP SCHEDULE				
LOOP	PHASE	SIZE	# OF TURNS	DIST. FROM STOP BAR
1	1	6X30	2	0'
5	5	6X30	2	0'
3A	3	6X30	2	0'
3B	3	6X30	2	0'
8	3	6X30	2	0'

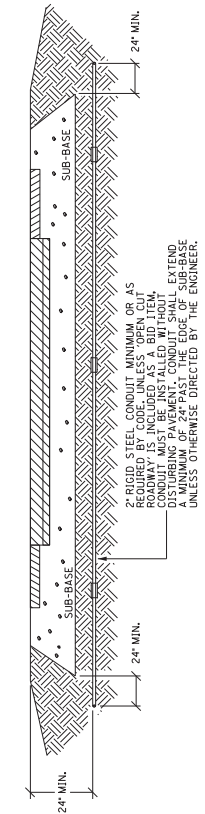
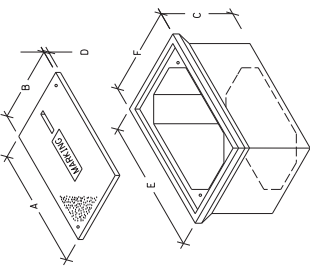
NOTE: STATIONS AND OFFSETS BASED ON FT. HARRODS DRIVE CENTERLINE

US 68 (HARRODSBURG RD) MP 2.403  
LOOP DETAIL SHEET

SCALE: N.T.S.

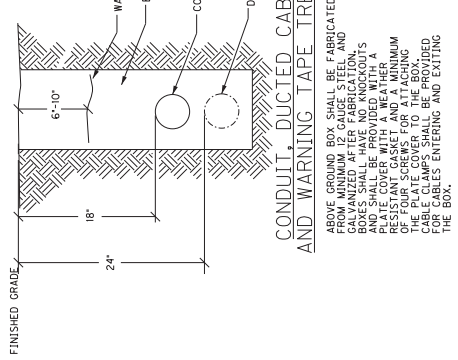
JUNCTION BOX DIMENSIONS (NOMINAL)						
	A	B	C	D	E	F
TYPE A	23"	14"	27"	2"	25"	15"
TYPE B	18"	11"	12"	1 1/4"	20"	13"
TYPE C	36"	24"	30"	3"	38"	26"

\* MINIMUM  
NOTES: STACKABLE BOXES ARE PERMITTED  
JUNCTION BOX



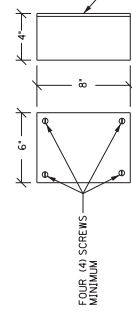
CONDUIT INSTALLATION UNDER EXISTING PAVEMENT DETAIL

DEPTHS SHOWN FOR CONDUIT AND CONDUIT INSTALLATION SHALL BE AS SHOWN. CONTRACTOR SHALL PLACE AND COMPACT BACKFILL IN 9" MAXIMUM LIFT TO THE SATISFACTION OF THE ENGINEER.

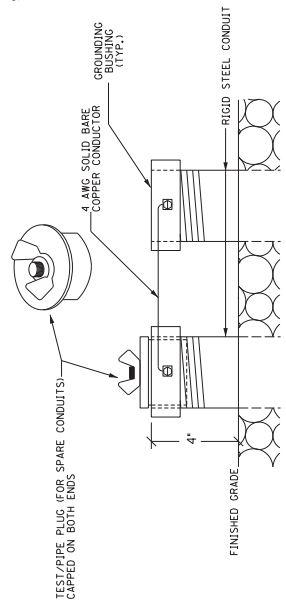


CONDUIT, DUCTED CABLE, AND WARNING TAPE TRENCH

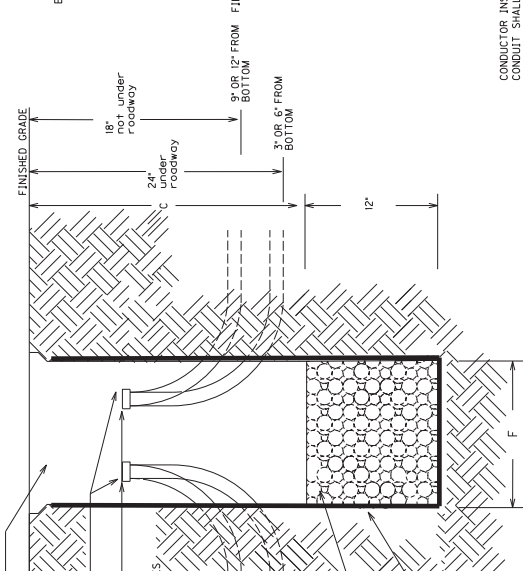
ABOVE GROUND BOX SHALL BE FABRICATED FROM MINIMUM 12 GAUGE STEEL AND BOXES SHALL HAVE NO ANKERS AND SHALL BE PROVIDED WITH A RESISTANT GASKET AND A MINIMUM OF FOUR SCREWS FOR ATTACHING TO THE SURFACE. CABLE CLAMPS SHALL BE PROVIDED FOR CABLES ENTERING AND EXITING THE BOX.



ABOVE GROUND BOX

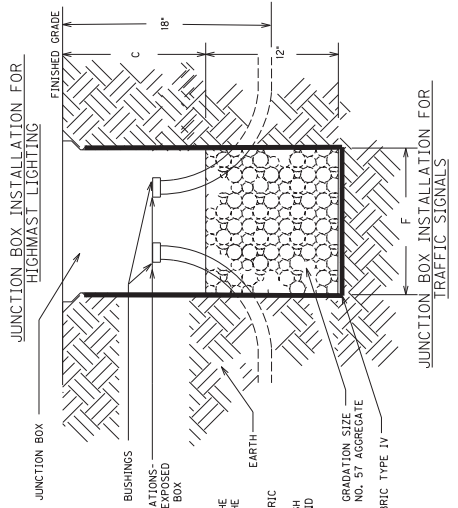
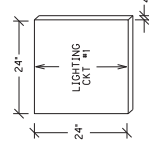
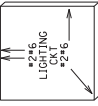


TEST PIPE PLUG (FOR SPARE CONDUITS) AND GROUNDING DETAIL CONCRETE CABLE MARKERS



JUNCTION BOX INSTALLATION FOR CONVENTIONAL LIGHTING

BEFORE THE INSTALLATION OF THE #57 AGGREGATE AND JUNCTION BOX, THE CONTRACTOR SHALL INSTALL AND JUNCTION BOX. THE CONTRACTOR SHALL INSTALL THE FABRIC SHALL EXTEND TO JUST BELOW THE LIP OF THE JUNCTION BOX AND SHALL BE CONTINUOUSLY ADHERED TO THE EXTERIOR OF THE BOX WITH ADHESIVE. ANY FABRIC SHALL BE CUT ONLY AS MUCH AS NECESSARY TO ALLOW PASSAGE OF EACH INDIVIDUAL CONDUIT THROUGH THE FABRIC. THE FABRIC SHALL BE INCIDENTAL TO BID ITEMS 48H, 2039NS835, OR 2039NS835.



JUNCTION BOX INSTALLATION FOR HIGHMAST LIGHTING

JUNCTION BOX INSTALLATION FOR TRAFFIC SIGNALS

TRAFFIC SIGNAL AND ROADWAY LIGHTING JUNCTION BOX AND CONDUIT DETAILS





**PROPOSAL BID ITEMS**

224434

Page 1 of 5

Report Date 5/23/22

**Section: 0001 - PAVING**

LINE	BID CODE	ALT	DESCRIPTION	QUANTITY	UNIT	UNIT PRIC	FP	AMOUNT
0010	00100		ASPHALT SEAL AGGREGATE	1.80	TON		\$	
0020	00103		ASPHALT SEAL COAT	.40	TON		\$	
0030	00190		LEVELING & WEDGING PG64-22	4.00	TON		\$	
0040	00214		CL3 ASPH BASE 1.00D PG64-22	532.00	TON		\$	
0050	00216		CL3 ASPH BASE 1.00D PG76-22	350.00	TON		\$	
0060	00336		CL3 ASPH SURF 0.38A PG76-22	160.00	TON		\$	
0070	00388		CL3 ASPH SURF 0.38B PG64-22	157.10	TON		\$	
0080	02101		CEM CONC ENT PAVEMENT-8 IN	72.00	SQYD		\$	
0090	02676		MOBILIZATION FOR MILL & TEXT (7-9012.70)	1.00	LS		\$	
0100	02676		MOBILIZATION FOR MILL & TEXT (FAYETTE US 27 @ W LOUDON AVE)	1.00	LS		\$	
0110	02676		MOBILIZATION FOR MILL & TEXT (FAYETTE US 68 @ FT HARRODS DR)	1.00	LS		\$	
0120	02676		MOBILIZATION FOR MILL & TEXT (JESSAMINE US 27 @ EDGEWOOD DR)	1.00	LS		\$	
0130	02677		ASPHALT PAVE MILLING & TEXTURING	345.00	TON		\$	
0140	20550ND		SAWCUT PAVEMENT	381.00	LF		\$	
0150	22906ES403		CL3 ASPH SURF 0.38A PG64-22	121.00	TON		\$	
0160	24785EC		FIBER REINFORCEMENT FOR HMA	435.00	TON		\$	
0170	24970EC		ASPHALT MATERIAL FOR TACK NON- TRACKING	3.77	TON		\$	

**Section: 0002 - ROADWAY**

LINE	BID CODE	ALT	DESCRIPTION	QUANTITY	UNIT	UNIT PRIC	FP	AMOUNT
0180	00001		DGA BASE	645.00	TON		\$	
0190	00078		CRUSHED AGGREGATE SIZE NO 2	230.00	TON		\$	
0200	01000		PERFORATED PIPE-4 IN	410.00	LF		\$	
0210	01010		NON-PERFORATED PIPE-4 IN	20.00	LF		\$	
0220	01020		PERF PIPE HEADWALL TY 1-4 IN	2.00	EACH		\$	
0230	01810		STANDARD CURB AND GUTTER	236.00	LF		\$	
0240	01811		STANDARD CURB AND GUTTER MOD	178.00	LF		\$	
0250	01811		STANDARD CURB AND GUTTER MOD LFUCG CURB AND GUTTER TYPE 1	261.00	LF		\$	
0260	01812		REMOVE CURB AND GUTTER	522.00	LF		\$	
0270	01825		ISLAND CURB AND GUTTER	150.00	LF		\$	
0280	01875		STANDARD HEADER CURB	30.00	LF		\$	
0290	01917		STANDARD BARRIER MEDIAN TYPE 2	37.00	SQYD		\$	
0300	01921		STANDARD BARRIER MEDIAN TYPE 4	124.00	SQYD		\$	
0310	02159		TEMP DITCH	500.00	LF		\$	
0320	02160		CLEAN TEMP DITCH	250.00	LF		\$	
0330	02200		ROADWAY EXCAVATION	807.00	CUYD		\$	
0340	02562		TEMPORARY SIGNS	720.00	SQFT		\$	
0350	02602		FABRIC-GEOTEXTILE CLASS 1	710.00	SQYD		\$	
0360	02604		FABRIC-GEOTEXTILE CLASS 1A	571.00	SQYD		\$	
0370	02607		FABRIC-GEOTEXTILE CLASS 2 FOR PIPE	180.00	SQYD	\$2.00	\$	\$360.00

**PROPOSAL BID ITEMS**

224434

Page 2 of 5

Report Date 5/23/22

LINE	BID CODE	ALT	DESCRIPTION	QUANTITY	UNIT	UNIT PRIC	FP	AMOUNT
0380	02650		MAINTAIN & CONTROL TRAFFIC (7-9012.70)	1.00	LS		\$	
0390	02650		MAINTAIN & CONTROL TRAFFIC (FAYETTE KY 4 @ RUSSELL CAVE RD)	1.00	LS		\$	
0400	02650		MAINTAIN & CONTROL TRAFFIC (FAYETTE MAN O' WAR BLVD @ PARKERS MILL RD)	1.00	LS		\$	
0410	02650		MAINTAIN & CONTROL TRAFFIC (FAYETTE US 25 @ CITATION BLVD)	1.00	LS		\$	
0420	02650		MAINTAIN & CONTROL TRAFFIC (FAYETTE US 27 @ W LOUDON AVE)	1.00	LS		\$	
0430	02650		MAINTAIN & CONTROL TRAFFIC (FAYETTE US 68 @ FT HARRODS DR)	1.00	LS		\$	
0440	02650		MAINTAIN & CONTROL TRAFFIC (JESSAMINE US 27 @ EDGEWOOD DR)	1.00	LS		\$	
0450	02671		PORTABLE CHANGEABLE MESSAGE SIGN	12.00	EACH		\$	
0460	02696		SHOULDER RUMBLE STRIPS	225.00	LF		\$	
0470	02701		TEMP SILT FENCE	745.00	LF		\$	
0480	02703		SILT TRAP TYPE A	1.00	EACH		\$	
0490	02704		SILT TRAP TYPE B	7.00	EACH		\$	
0500	02705		SILT TRAP TYPE C	20.00	EACH		\$	
0510	02706		CLEAN SILT TRAP TYPE A	1.00	EACH		\$	
0520	02707		CLEAN SILT TRAP TYPE B	7.00	EACH		\$	
0530	02708		CLEAN SILT TRAP TYPE C	20.00	EACH		\$	
0540	02720		SIDEWALK-4 IN CONCRETE	431.00	SQYD		\$	
0550	02721		REMOVE CONCRETE SIDEWALK	174.00	SQYD		\$	
0560	02726		STAKING (7-9012.70)	1.00	LS		\$	
0570	02726		STAKING (FAYETTE KY 4 @ RUSSELL CAVE RD)	1.00	LS		\$	
0580	02726		STAKING (FAYETTE MAN O' WAR BLVD @ PARKERS MILL RD)	1.00	LS		\$	
0590	02726		STAKING (FAYETTE US 25 @ CITATION BLVD)	1.00	LS		\$	
0600	02726		STAKING (FAYETTE US 27 @ W LOUDON AVE)	1.00	LS		\$	
0610	02726		STAKING (FAYETTE US 68 @ FT HARRODS DR)	1.00	LS		\$	
0620	02726		STAKING (JESSAMINE US 27 @ EDGEWOOD DR)	1.00	LS		\$	
0630	02775		ARROW PANEL	2.00	EACH		\$	
0640	03225		TUBULAR MARKERS (PEXCO CITY POST EMBEDDED ANCHOR CUP)	15.00	EACH		\$	
0650	05950		EROSION CONTROL BLANKET	1,106.00	SQYD		\$	
0660	05952		TEMP MULCH	900.00	SQYD		\$	
0670	05953		TEMP SEEDING AND PROTECTION	735.00	SQYD		\$	
0680	05963		INITIAL FERTILIZER	.18	TON		\$	
0690	05964		MAINTENANCE FERTILIZER	.15	TON		\$	
0700	05985		SEEDING AND PROTECTION	1,676.00	SQYD		\$	
0710	05990		SODDING	610.00	SQYD		\$	
0720	05992		AGRICULTURAL LIMESTONE	.87	TON		\$	
0730	06406		SBM ALUM SHEET SIGNS .080 IN	75.50	SQFT		\$	

**PROPOSAL BID ITEMS**

224434

Page 3 of 5

Report Date 5/23/22

LINE	BID CODE	ALT	DESCRIPTION	QUANTITY	UNIT	UNIT PRIC	FP	AMOUNT
0740	06407		SBM ALUM SHEET SIGNS .125 IN	10.00	SQFT		\$	
0750	06410		STEEL POST TYPE 1	149.00	LF		\$	
0760	06510		PAVE STRIPING-TEMP PAINT-4 IN	700.00	LF		\$	
0770	06514		PAVE STRIPING-PERM PAINT-4 IN	550.00	LF		\$	
0780	06540		PAVE STRIPING-THERMO-4 IN W	1,862.00	LF		\$	
0790	06541		PAVE STRIPING-THERMO-4 IN Y	3,058.00	LF		\$	
0800	06542		PAVE STRIPING-THERMO-6 IN W	1,210.00	LF		\$	
0810	06543		PAVE STRIPING-THERMO-6 IN Y	452.00	LF		\$	
0820	06547		PAVE STRIPING-THERMO-12 IN Y	16.00	LF		\$	
0830	06566		PAVE MARKING-THERMO X-WALK-12 IN	623.00	LF		\$	
0840	06568		PAVE MARKING-THERMO STOP BAR-24IN	514.00	LF		\$	
0850	06569		PAVE MARKING-THERMO CROSS-HATCH	305.00	SQFT		\$	
0860	06574		PAVE MARKING-THERMO CURV ARROW	26.00	EACH		\$	
0870	06575		PAVE MARKING-THERMO COMB ARROW	10.00	EACH		\$	
0880	06598		PAVEMENT MARKING REMOVAL	720.00	SQFT		\$	
0890	20550ND		SAWCUT PAVEMENT	1,524.00	LF		\$	
0900	21373ND		REMOVE SIGN	2.00	EACH		\$	
0910	21417ES717		PAVE MARK THERMO CONE CAP-SOLID YELLOW	90.00	SQFT		\$	
0920	21596ND		GMSS TYPE D SURFACE MOUNT	2.00	EACH		\$	
0930	21597EN		REMOVE PERF PIPE HEADWALL	1.00	EACH		\$	
0940	22664EN		WATER BLASTING EXISTING STRIPE	195.00	LF		\$	
0950	22680EN		QWICK CURB MEDIAN SEPARATOR	103.00	LF		\$	
0960	23055N		REMOVE BRICK MAILBOX (7-9006.30)	1.00	LS		\$	
0970	23158ES505		DETECTABLE WARNINGS	179.00	SQFT		\$	
0980	23261EC		PAVE MARK-THERMO-X-WALK-24 IN	150.00	LF		\$	
0990	23608EC		YELLOW PAINT FOR MEDIAN SAFETY NOSE	6.00	SQFT		\$	
1000	23875NC		REMOVE THERMOPLASTIC ARROWS	2.00	EACH		\$	
1010	24189ER		DURABLE WATERBORNE MARKING-6 IN W	1,908.00	LF		\$	
1020	24190ER		DURABLE WATERBORNE MARKING-6 IN Y	1,422.00	LF		\$	
1030	24489EC		INLAID PAVEMENT MARKER	71.00	EACH		\$	
1040	24631EC		BARCODE SIGN INVENTORY	7.00	EACH		\$	
1050	24679ED		PAVE MARK THERMO CHEVRON	1,100.00	SQFT		\$	
1060	24683ED		PAVE MARKING-THERMO DOTTED LANE EXTEN	58.00	LF		\$	
1070	24683ED		PAVE MARKING-THERMO DOTTED LANE EXTEN (6 INCH WIDTH)	71.00	LF		\$	

**Section: 0003 - DRAINAGE**

LINE	BID CODE	ALT	DESCRIPTION	QUANTITY	UNIT	UNIT PRIC	FP	AMOUNT
1080	00462		CULVERT PIPE-18 IN	128.00	LF		\$	
1090	00522		STORM SEWER PIPE-18 IN	28.00	LF		\$	
1100	00524		STORM SEWER PIPE-24 IN	111.00	LF		\$	
1110	01310		REMOVE PIPE	13.00	LF		\$	
1120	01511		DROP BOX INLET TYPE 5D	1.00	EACH		\$	
1130	01514		DROP BOX INLET TYPE 5E	1.00	EACH		\$	

**PROPOSAL BID ITEMS**

224434

Page 4 of 5

Report Date 5/23/22

LINE	BID CODE	ALT	DESCRIPTION	QUANTITY	UNIT	UNIT PRIC	FP	AMOUNT
1140	01550		DROP BOX INLET TYPE 12A	35.00	LF		\$	
1150	01571		DROP BOX INLET TYPE 13ST (TOP PHASE)	1.00	EACH		\$	
1160	01584		CAP DROP BOX INLET	3.00	EACH		\$	
1170	01642		JUNCTION BOX-18 IN	1.00	EACH		\$	
1180	01718		REMOVE INLET (TOP PHASE ONLY)	1.00	EACH		\$	
1190	02625		REMOVE HEADWALL	1.00	EACH		\$	
1200	08100		CONCRETE-CLASS A	1.13	CUYD		\$	
1210	21541NN		CORED HOLE DRAINAGE BOX CON- 18 IN	1.00	EACH		\$	
1220	23610NC		CORED HOLE DRAINAGE BOX CON (24 INCH)	1.00	EACH		\$	
1230	23610NC		CORED HOLE DRAINAGE BOX CON (4 INCH)	1.00	EACH		\$	
1240	23952EC		DRAINAGE JUNCTION BOX TY B	1.00	EACH		\$	

**Section: 0004 - SIGNING**

LINE	BID CODE	ALT	DESCRIPTION	QUANTITY	UNIT	UNIT PRIC	FP	AMOUNT
1250	20194ED		REMOVE & RESET TRAFFIC SIGN	1.00	EACH		\$	

**Section: 0005 - SIGNALIZATION**

LINE	BID CODE	ALT	DESCRIPTION	QUANTITY	UNIT	UNIT PRIC	FP	AMOUNT
1260	02701		TEMP SILT FENCE	300.00	LF		\$	
1270	02705		SILT TRAP TYPE C	2.00	EACH		\$	
1280	02708		CLEAN SILT TRAP TYPE C	2.00	EACH		\$	
1290	04792		CONDUIT-1 IN	40.00	LF		\$	
1295	04792		CONDUIT-1 IN (RIGID STEEL) (ADDED 5/23/22)	60.00	LF		\$	
1300	04793		CONDUIT-1 1/4 IN	38.00	LF		\$	
1310	04811		ELECTRICAL JUNCTION BOX TYPE B (REVISED 5-23-22)	1.00	EACH		\$	
1320	04811		ELECTRICAL JUNCTION BOX TYPE B	3.00	EACH		\$	
1330	04830		LOOP WIRE	3,955.00	LF		\$	
1340	04844		CABLE-NO. 14/5C	3,920.00	LF		\$	
1350	04850		CABLE-NO. 14/1 PAIR	1,800.00	LF		\$	
1360	04886		MESSENGER-15400 LB	36.00	LF		\$	
1370	04895		LOOP SAW SLOT AND FILL	1,012.00	LF		\$	
1375	04895		LOOP SAW SLOT AND FILL (ADDED 5-11-22)	575.00	LF		\$	
1380	06472		INSTALL SPAN MOUNTED SIGN	1.00	EACH		\$	
1390	20093NS835		INSTALL PEDESTRIAN HEAD-LED	6.00	EACH		\$	
1400	20188NS835		INSTALL LED SIGNAL-3 SECTION	36.00	EACH		\$	
1410	20189NS835		INSTALL LED SIGNAL-5 SECTION	1.00	EACH		\$	
1420	20266ES835		INSTALL LED SIGNAL- 4 SECTION	7.00	EACH		\$	
1430	21659NN		RELOCATE SIGNAL HEAD	2.00	EACH		\$	
1440	21743NN		INSTALL PEDESTRIAN DETECTOR	8.00	EACH		\$	

**PROPOSAL BID ITEMS**

224434

Page 5 of 5

Report Date 5/23/22

LINE	BID CODE	ALT	DESCRIPTION	QUANTITY	UNIT	UNIT PRIC	FP	AMOUNT
1450	23222EC		INSTALL SIGNAL PEDESTAL	2.00	EACH		\$	
1460	23235EC		INSTALL PEDESTAL POST	2.00	EACH		\$	
1470	23556NC		ADJUST LIGHTING JUNCTION BOX	1.00	EACH		\$	
1480	24900EC		PVC CONDUIT-1 1/4 IN-SCHEDULE 80	60.00	LF		\$	
1485	24901EC		PVC CONDUIT-2 IN-SCHEDULE 80 (ADDED 5-23-22)	12.00	LF		\$	
1490	24955ED		REMOVE SIGNAL EQUIPMENT (7-9006.30 US 68 AT FT HARRODS)	1.00	EACH		\$	
1500	24955ED		REMOVE SIGNAL EQUIPMENT (7-9012.70 US 27 AT HAGGARD LN)	1.00	EACH		\$	
1520	24955ED		REMOVE SIGNAL EQUIPMENT (7-9012.70 US 27 AT I-75 SB RAMP ON RAMP)	1.00	EACH		\$	
1530	24955ED		REMOVE SIGNAL EQUIPMENT (7-9012.90 US 27 AT EDGEWOOD DRIVE)	1.00	EACH		\$	
1540	24955ED		REMOVE SIGNAL EQUIPMENT (FAYETTE MAN O' WAR BLVD @ PARKERS MILL RD)	1.00	EACH		\$	
1550	24963ED		LOOP TEST	6.00	EACH		\$	

**Section: 0006 - DEMOBILIZATION**

LINE	BID CODE	ALT	DESCRIPTION	QUANTITY	UNIT	UNIT PRIC	FP	AMOUNT
1560	02569		DEMOBILIZATION	1.00	LS		\$	